

January 2023

Project of the Month



Three Rigid Heddle Projects for the Home

Felted Wool Mug Rugs/Coasters

Cotton/Linen Mug Rugs/Coasters

Log Cabin Trivets

All projects can be woven on a 4-harness loom



Project #1: Felted Wool Mug Rugs/Coasters



Finished Size: 5.5" X 5.5"

Yarn: Harrisville Designs Highland Wool (900 ypp)

Sett: 8 epi; 8 ppi

Width in reed: 7.5"

Number of ends: 60 ends

Warp length (8 mug rugs): 72" (2 yards)

Instructions:

Design a stripe pattern of 60 ends for the warp.

Warp your loom using the direct warping method.

Weave the length of warp. Weave either with one color for stripes, or weave as plaid, or add weft stripes where you want them.

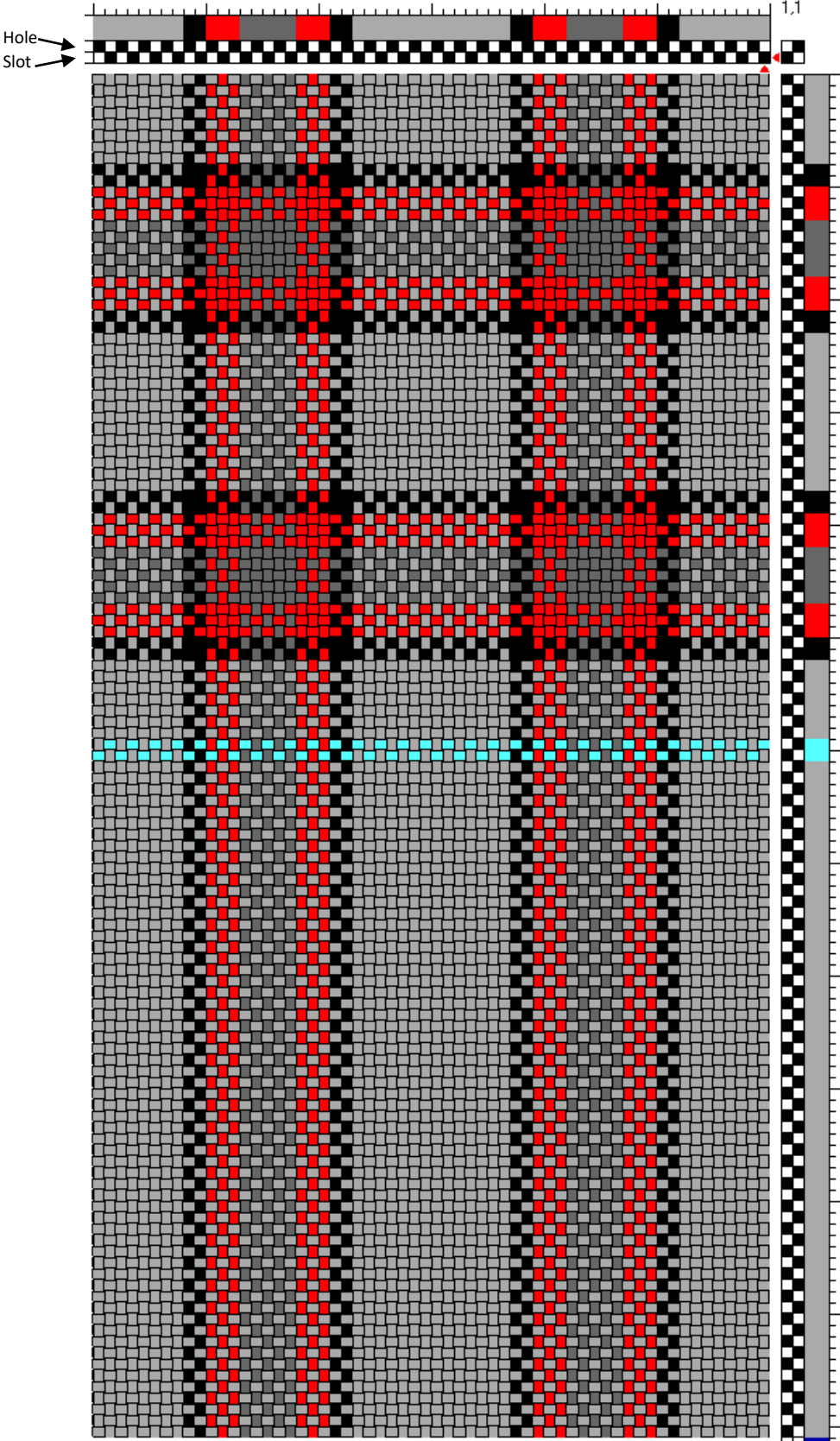
Cut off the loom and zigzag the ends.

Wash in washing machine in warm water with load of laundry; may dry in dryer if not felted enough.

Cut into squares.

Optional: Make into potholders using origami folding method. If you want the folding instructions, please email the studio.

Draft:



Project #2: Cotton/Linen Mug Rugs/Coasters



A sample of weave:



Finished Size: 5.5" X 5.5"

Warp Yarn: 3/2 Perle Cotton (1260 ypp)

Weft Yarn: Hems: 5/2 Perle Cotton (2100 ypp)
Body: Mattlin (200 ypp)

Sett: 12 epi; 5.5 ppi (11 thick to 2")
Begin and end in slot position

Width in reed: 6"

Number of ends: 71 + 4 ds = 75 ends

Woven Length (per mug rug): 6" + 3" hems = 9"

Warp length (6 mug rugs): 84" including 10" take-up plus 20" loom waste

Guide String: 90"

Instructions:

Design a stripe pattern for the warp.

Weave using tape to measure.

HEM FIRST – THEN WASH!

Remove from loom, zigzag the edges, and cut apart.

Roll hems and sew.

Machine wash and dry using laundry bag and color catchers.

Steam press.

Project #3: Log Cabin Trivet



- Warp Yarn:** UKI 3/2 perle cotton (1260 ypp) #117 Stone and #75 Cobalt Blue
- Weft Yarn:** Thin: 5/2 perle cotton (2100 ypp) #117 Stone
Thick: 4/6 Mattlin #1004 Navy
- Sett:** 12 epi; 11 ppi hem – 4 thick per inch of pattern
Begin and end in slot position
- Reed:** 8 dpi **Sley:** 1 per dent
- Width in reed:** 10"
- Number of ends:** 117 + 2 ds = 119 ends
(Count number of slots to make sure you have enough before winding)
- Woven Length (per piece):** 10" pattern + 3" hems = 13"
Two pieces will be sewn together to make 1 trivet
- Warp length (1 trivet):** 56" (1.56 yards) including 4" take-up plus 26" loom waste
- Guide String:** 62"

Warp Color Order: (from left)

Cobalt Blue	1	1		1		1		1		1		1		1		1		1		1	
Stone			1		1		1		1		1		1		1		1		1		1
Repeat	<----- X3 ----->																				

Warp Color Order: (continued)

Cobalt Blue		1		1		1		1		1		1		1		1		1		1	
Stone	1		1		1		1		1		1		1		1		1		1		1
Repeat																					

Warp Color Order: (continued)

Cobalt Blue	1		1		1		1	1		1		1		1		1		1		1
Stone		1		1		1		1		1		1		1		1		1		1
Repeat	<----- X3 ----->																			

Weft Color Order:

Stone (Thin)	Navy (Thick)	Repeat
1		X3
	1	
1		
	1	
1		
	1	
1		
	1	
1		
	1	
	1	
1		
	1	
1		
	1	
1		
	1	
	1	

Stone (Thin)	Navy (Thick)	Repeat
1		
	1	
1		
	1	
1		
	1	
1		
	1	
1		
	1	
1		
	1	
1		
	1	
1		
	1	
1		
	1	
1		
	1	
1		

Stone (Thin)	Navy (Thick)	Repeat
	1	
1		
	1	
1		
	1	
1		
	1	
1		
	1	
1		
	1	
1		X3
	1	
1		
	1	
1		
	1	
1		
	1	
1		
	1	
1		

Shrinkage:

	Off Loom	Washed	% Shrinkage
Length	26.75"	24"	10%
Width	9.5"	8.75"	8%

Instructions:

Must be indirect warped (wind warp on warping board using short cross, 2 warp chains: one of each color; then warp loom).

Tie on back 2 + 2 otherwise knots will be too large.

Weaving: 1 = Down shed
 2 = Up shed

Wash at 140 degrees on regular cycle with 2 color catchers; dry in dryer.

Fabric is too thin as woven, therefore sew two together adding heat resistant batting between the layers. Top stitch around edge and down each side of the center square (edge to edge of trivet).

DRAFT:

