



# Fibonacci Twill Stripe Scarf

Can be woven in Plain Weave on a Rigid Heddle loom

Yarn available to purchase at A Place to Weave



# Fibonacci Twill Stripe Scarf

**Yarn:** Galler Heather Prime Alpaca (1320 ypp)  
**Warp yarns:** #234 Mulberry, #232 Hollywood, #212 Ice Pink  
**Weft yarns:** #230 Strawberry Mouse  
  
**Sett:** 12 epi; 12 ppi  
**Reed:** 12 dpi                   **Sley:** 1 per dent  
**Width in reed:** 8.5"  
**Number of ends:** 101 + 4 dfs = 105 ends  
**Woven length:** 72" + 8" twisted fringe each end  
**Warp length (1 scarf):** 99" (2.75 yards) includes 27" loom waste  
 (loom waste used for fringe length)  
**Finished Dimensions:** 7.75" X 70" plus twisted fringe

## Warp Color Order: (from left)

Hollywood	2	13				5		3		2				2		3		5				13	2	
Mulberry				8								1							8					
Ice Pink			1		2		3		5		8		8		5		3		2		1			

## Project Dimensions:

	In reed/ Woven Length	Off Loom	Washed	% Shrinkage
<b>Length</b>	75.75"	72"	70"	3%
<b>Width</b>	8"	8"	7.75"	3%

## Weaving Instructions:

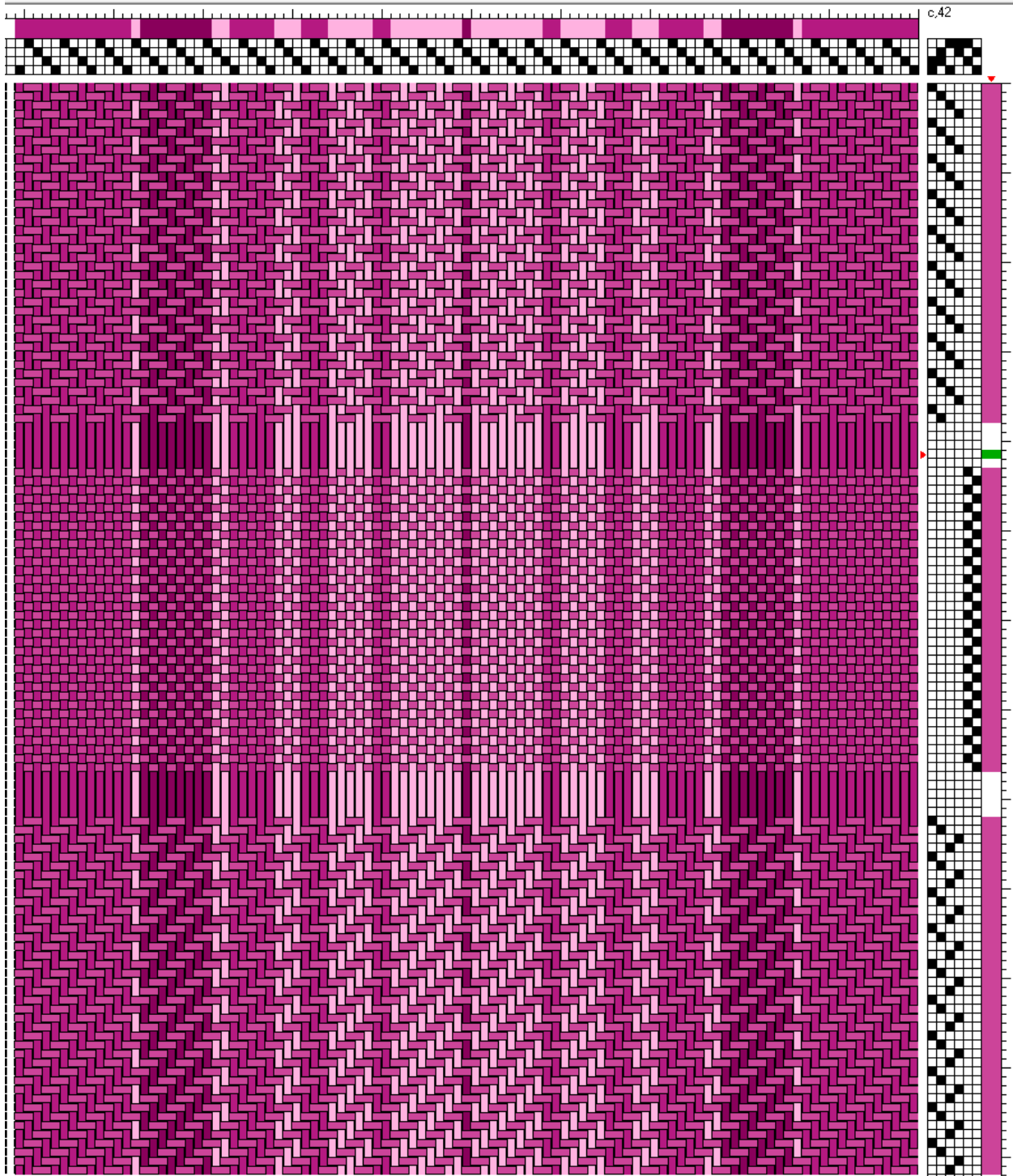
Begin with two rows of plain weave and then weave pattern of your choice (2/2 straight twill; broken twill; or plain weave) for 72" measured without tension. End with two rows of plain weave.

Twist fringe in groups of 3 + 3 (6 ends total) or 4 + 4 (8 ends total); twisted 20 times.

Machine wash wool cycle, warm water with Seventh Generation free and clear detergent. Air dry and steam press.

# Draft:

Broken Twill, Plain Weave, Straight Twill



## Sample showing different patterns:

Plain Twill, Straight Twill, Broken Twill

